



ISO 9001:2000 Certified Company



AT ORCHID AM2

AT ORCHID AM2 SHDSL (Single-Paired High Speed Digital Subscriber Loop) router complies with G.991.2 standard with 10/100 Base-T auto-negotiation. It provides business-class, multi-range from 64kbps to 2.304Mbps payload rates over existing single-pair copper wire. ANDA Telecom Orchid AM 2 SHDSL routers are designed not only to optimize the service bit rate from central office to customer premises also it integrates high-end Bridging/Routing capabilities with advanced functions of Multi-DMZ, virtual server mapping and VPN pass-through.

The ANDA Telecom Orchid AM 2 SHDSL router allows customers to leverage the latest in broadband technologies to meet their growing data communication needs. Through the power of ANDA Telecom Orchid AM 2 SHDSL products, you can access superior manageability and reliability.

Features

- Easy configuration and management with password control for various application environments
- Efficient IP routing and transparent learning bridge to support broadband Internet services
- VPN pass-through for safeguarded connections
- DMZ host/Multi-DMZ/Multi-NAT enables multiple workstations on the LAN to access the Internet for the cost of IP address
- Fully ATM protocol stack implementation over SHDSL
- PPPoA and PPPoE support user authentication with PAP/CHAP/MS-CHAP
- SNMP management with SNMPv1/SNMPv2 agent and MIB II
- Getting enhancements and new features via Internet software upgrade

Routing

- Support IP/TCP/UDP/ARP/ICMP/IGMP protocols
- IP routing with static routing and RIPv1/RIPv2 (RFC1058/2453)
- IP multicast and IGMP proxy (RFC1112/2236)
- Network address translation (NAT/PAT) (RFC1631)
- NAT ALGs for ICQ/Netmeeting/MSN/Yahoo Messenger
- DNS relay and caching (RFC1034/1035)
- DHCP server, client and relay (RFC2131/2132)

ANANDA Telecom Pvt. Ltd.

Registered office : E-36, Amar Colony, Lajpat Nagar- IV, New Delhi – 110024, INDIA

Phone : +91 11 41323629, +91 93 502 57173

E-mail : Info@andatelecomindia.com

URL : www.andatelecomindia.com



ISO 9001:2000 Certified Company

Bridging

- IEEE 802.1D Transparent Bridging

Security

- DMZ host/Multi-DMZ/Multi-NAT function
- Virtual server mapping (RFC1631)
- VPN pass-through for PPTP/L2TP/IPSec tunneling
- Natural NAT firewall

Management

- Easy-to-use web-based GUI for quick setup, configuration and management
- Menu-driven interface/Command-line interface (CLI) for local console and Telnet access
- Password protected management and access control list for administration
- SNMP management with SNMPv1/SNMPv2c (RFC1157/1901/1905) agent and MIB II (RFC1213/1493)
- Software upgrade via web-browser/TFTP server

ATM

- Up to 8 PVCs
- OAM F4/F5 loopback test
- AAL5

ATM QoS

- UBR (Unspecified Bit Rate)
- CBR (Constant Bit Rate)
- VBR-rt (Variable Bit Rate Real Time)
- VBR-nrt (Variable Bit Rate Non-real Time)

AAL5 Encapsulation

- VC multiplexing and SNAP/LLC
- Ethernet over ATM (RFC 2684/1483)
- PPP over ATM (RFC 2364)
- Classical IP over ATM (RFC 1577)

ANDA Telecom Pvt. Ltd.

Registered office : E-36, Amar Colony, Lajpat Nagar- IV, New Delhi – 110024, INDIA

Phone : +91 11 41323629, +91 93 502 57173

E-mail : Info@andatelecomindia.com

URL : www.andatelecomindia.com



ISO 9001:2000 Certified Company

PPP

- PPP over Ethernet for fixed and dynamic IP (RFC 2516)
- PPP over ATM for fixed and dynamic IP (RFC 2364)
- User authentication with PAP/CHAP/MS-CHAP

WAN Interface

- SHDSL: ITU-T G.991.2 (Annex A, Annex B)
- Encoding scheme: 16-TCPAM
- Data Rate: N x 64Kbps (N=0~36, 0 for adaptive)
- Impedance: 135 ohms

LAN Interface

- 10 Base-T and 100 Base-T auto-negotiation

Hardware Interface

- WAN: RJ-45
- LAN: RJ-45
- Console port: RS232 female
- RST: Reset Button for Factory Default

Indicators

- General: PWR
- WAN: LNK, ACT
- LAN: 10M/ACT, 100M/ACT, ALM

Physical/Electrical

- Dimensions: 18.7 x 3.3 x 14.5 cm (WxHxD)
- Power: 100~240VAC
- Power consumption: 5 watts max
- Temperature: 0~45°C
- Humidity: 0%~95% RH (non-condensing)

Memory

- 2MB Flash Memory, 4MB SDRAM

ANDA Telecom Pvt. Ltd.

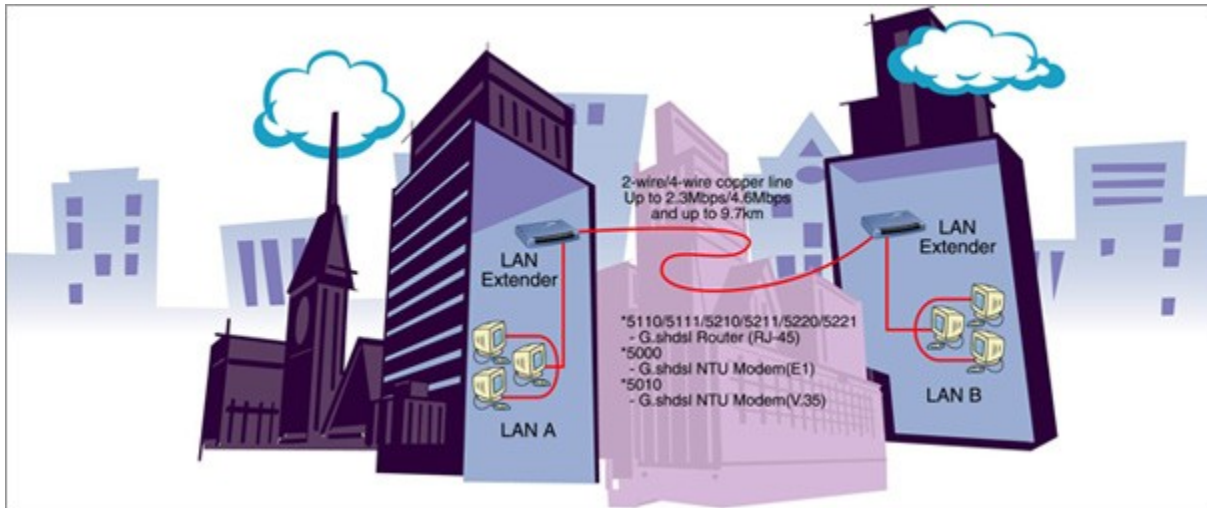
Registered office : E-36, Amar Colony, Lajpat Nagar- IV, New Delhi – 110024, INDIA

Phone : +91 11 41323629, +91 93 502 57173

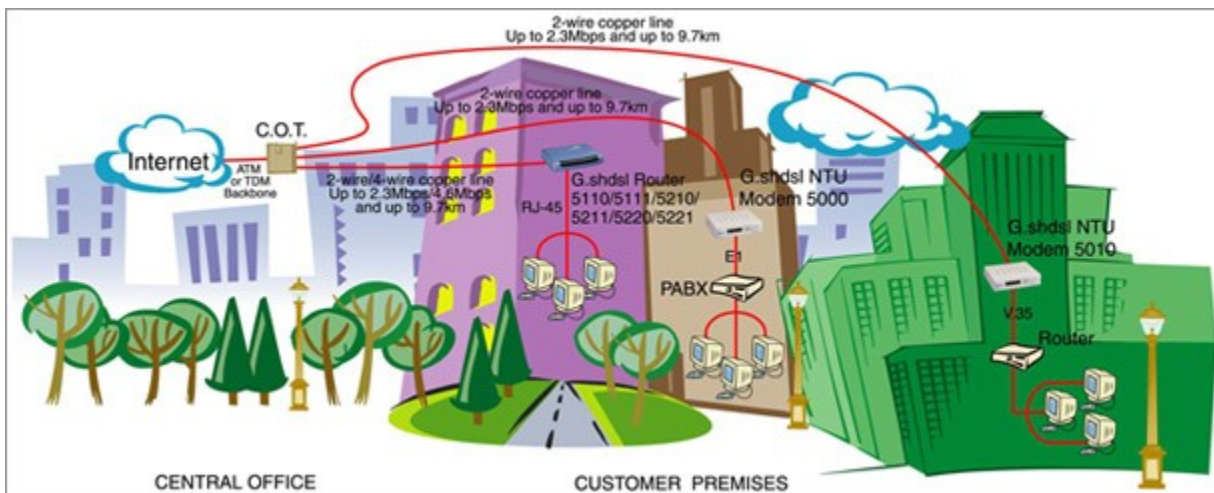
E-mail : Info@andatelecomindia.com

URL : www.andatelecomindia.com

Application I: Ethernet over SHDSL(LAN Extension)



Application II: Components of Leased Line Solutions for Carrier/ISP/ASP



ANDA Telecom Pvt. Ltd.

Registered office : E-36, Amar Colony, Lajpat Nagar- IV, New Delhi – 110024, INDIA

Phone : +91 11 41323629, +91 93 502 57173

E-mail : Info@andatelecomindia.com

URL : www.andatelecomindia.com